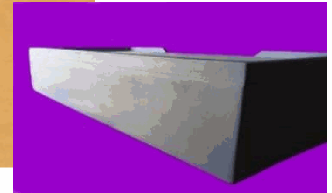
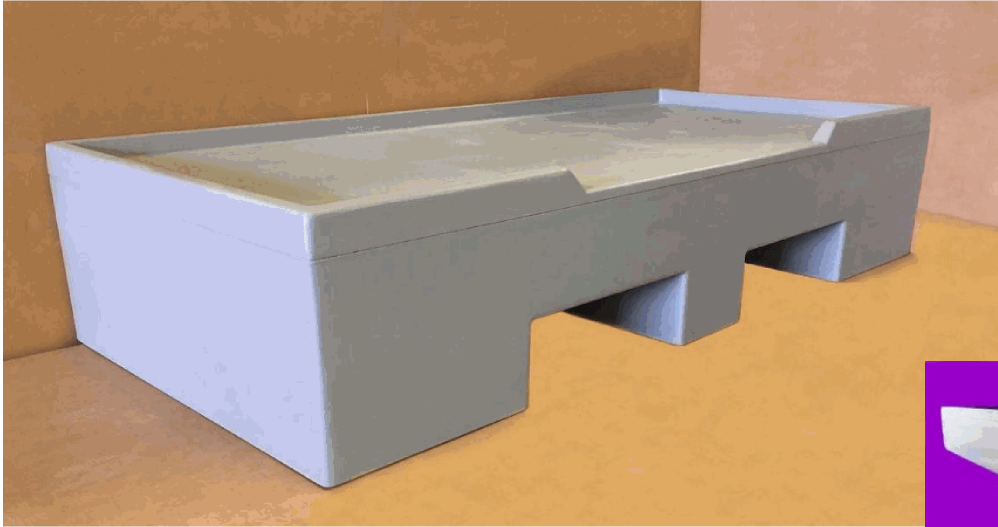


DURADORM Bed with patient lift device access



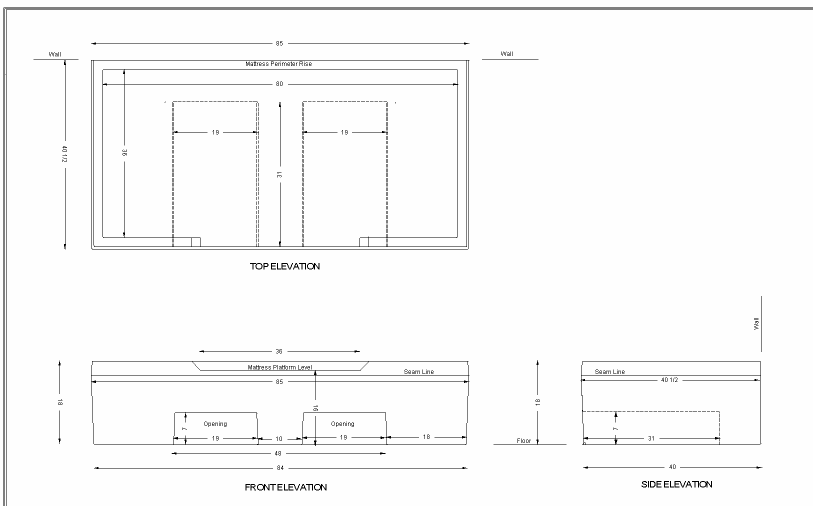
View of the back of the bed

Model 418518 B/L

DURADORM molded fiberglass free standing bed, enclosed on all sides, with two openings in the front to allow the use of a patient lift device. This bed is ligature resistant, has rounded corners and edges, textured surface and monolithic construction.

The bed has been designed for use by obese patients and will support the weight without structural concerns. Safe to use by staff and patients alike, manufactured to withstand the intensive use typical of mental health facilities and rehabilitation centers.

Overall height is kept low enough for most patients to reach the floor while seating, something difficult to do on beds equipped with a separate riser. The raised border that helps keep the mattress in place, is indented in the front for added comfort when seating.



WIDTH LENGTH HEIGHT WEIGHT

40.5" 85" 18" 200#

Mattress platform: 36" x 80"

Openings 19" w x 7" h x 39" deep, 10" apart